


Luristan Swords

IMAS 2

Note: The "Luristn Sword" paged will be formatted somewhat differently (simpler) than the rest. As I grew older, my eyes deteriorated to a point where I can just barely type stuff in my html editor. I apologize for typos and perfectly spelled but wrong words produced by the erroe correction without me noticing.

Below are mny internla notes made after obtaining the sword

General Data IMAS 3

Object:	Iron Mask Sword long; Dec. 2020	I
Origin:	Bought from <u>Hermann Historica</u>	Dec. 2020
Provenance:	Aus Auflösung eines in Deutschland verwahrten Händlerlagers. Erworben in den 1980er Jahren im belgischen Kunsthandel.	
Price:	€ 1.200	
Desorption	42 cm lange, schmale Klinge ohne Mittelgrat. Vorderste Spitze abgebrochen, kleine Scharten an den Schärfe. Eingefasst in den mit der Breitseite um 90 Grad verdrehten Griff. Der untere Teil einst trapezoid, ursprünglich mit je zwei übereinander liegenden Tiermasken, die nur auf einer Seite erhalten sind. Darüber die nach oben sich verbreiternde, dicke Griffplatte mit zwei nachträglich verschmiedeten, ringsum verlaufenden Rippen versehen. Oben durch runde Knaufscheibe abgeschlossen, die an beiden Seiten durch je zwei Masken verziert ist: außen ein männliches Gesicht mit Bart, auf der Oberseite der Knaufscheibe je ein Tierkopf. Seltene Waffe der frühen altiranischen Eisenzeit. Gesamtlänge 54,5 cm	
Seller		
Notes:		
	Ein Kopf sehr gut erhalten; außerdem „Perlschnurmuster“ am Übergang Griff – Platte. Mit Dremel / Drahtbürste größten Rost entfernt	
Pictures:		



Details IMAS 3

IMAS 3 is considerably longer than INAS 1 – 53 cm compared to 49 cm. It is heavily corroded but one of the heads is relatively well preserved.



Stylistically similar to the heads of IMAS 2 but somewhat less elaborate. No fine structure in the beard (if there is one), for example.

The “animal” is less well preserved. Both have just a flat surface as “mouth”, a feature also found with other IMAS’.

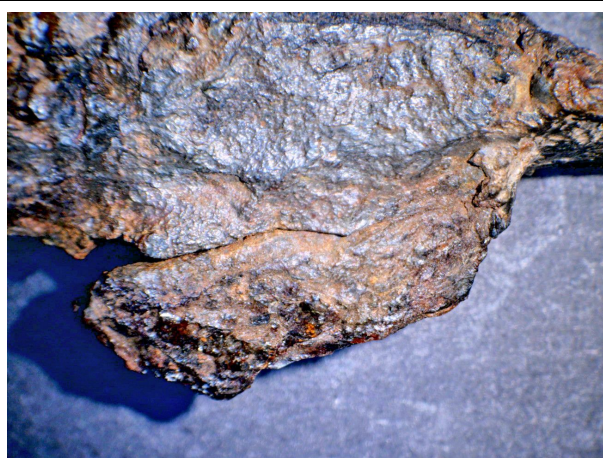
An unusual feature is found at the junction of **blade and hilt**. It appears like iron has been “smeared on”, and these smears curve around and possibly form part of the crimp on the small site of the animal. Several corrosion induced cracks may help to speculate about the internal structure but U will restrain myself at this point.



Looking sideways at the juncture blade - grip.



Looking "flat" on the blade where it joins the grip with the "smeared" iron



One of the animals has been lost, the other on (shown here) is in the process of falling out. Much can be seen about the crimping structure but nothing that allows some general conclusions.



The underside of the top plate has some decorations but not as elaborate as IMAS 1



The two rings are done in a "ring crimped into a base ring" but they are rather corroded.