

# Luristan Swords

## IMAS 2

Note: The "Luristn Sword" paged will be formatted somewhat differently (simpler) than the rest. As I grew older, my eyes deteriorated to a point where I can just barely type stuff in my html editor. I apologize for typos and perfectly spelled but wrong words produced by the erroe correction without me noticing.

**My internal notes after buying the seord.**

## General Data IMAS 2

<b>Object:</b>	<b>Luristan Iron Mask Sword</b> ( <u>Imas 2</u> )	
<b>Origin:</b>	Bought from <u>adamantiquities</u> via e-bay	<b>July 2017</b>
<b>Provenance:</b>	Ex private England collector.	
<b>Price:</b>	\$ 3.500.- + 7 % custom (special rate). Offered for \$ 4.200.-	
<b>Description</b>	Ancient Luristan Near Eastern Iron Sword, 2nd millennium BC. Length: 52 cm	
<b>Notes:</b>	Negotiated price. Seller was not very cooperative after money transfer, had to threaten cancellation. Did not mention that sword is broken. Absolutely best preserved heads so far. Must go to a museum! Was painted with clear lacquer	
<b>Pictures:</b>		



One of the heads. Rather perfectly preserved.  
Cleaned heads meanwhile



The other head and the animals attached to the heads

The break in the blade is hardly visible





Shop by category

Search...

All Categories

Search

[Back to home page](#) |
 [Listed in category:](#)
[Antiques](#) >
 [Antiquities](#) >
 [Near Eastern](#)

People who viewed this item also viewed



Ancient Luristan Near Eastern Bronze Sword  
 C \$757.80  
 + C \$66.83



ZURQIEH - ANCIENT NEAR EASTERN IRON  
 C \$831.50  
 + C \$25.26



ANCIENT NEAR EASTERN STONE BACE  
 C \$694.65  
 + C \$69.15



Ancient Luristan bronze Master of Animal  
 C \$1,515.60  
 + C \$99.83



Wonderful Luristan bronze and iron short  
 C \$1,888.18  
 + C \$44.20



Have one to sell? [Sell it yourself](#)

ANCIENT NEAR EASTERN LURISTAN IRON SWORD RARE

Item condition: —

[Add to watch list](#)

Price: **US \$4,200.00**  
 Approximately  
 C \$5,304.68

[Buy It Now](#)

[Add to cart](#)

Best Offer

[Make Offer](#)

1 watching

[Add to watch list](#)

[Add to collection](#)

Longtime member

Best offer available

Shipping: **US \$45.00** (approx. C\$66.83) [USPS First Class Mail International / First Class Package International Service](#)  
[See details](#)  
 See details about international shipping here.  
 Item location: **USA, United States**  
 Ships to: **Worldwide**

Delivery: **Estimated Delivery within 7-21 business days**  
 Seller ships within 1 day after receiving cleared payment.

Payments: [PayPal](#)

Credit cards processed by PayPal  
 Visa/MasterCard, Amex, Discover  
[See payment information](#)

Returns: **14 day money back, buyer pays return shipping** |  
[See details](#)

Guarantee:

[See details](#)

Get the item you ordered or get your money back.  
 Covers your purchase price and original shipping.

Seller information

[adamantiquities1](#) (3057)

97.7% Positive feedback

[Follow this seller](#)

[See other items](#)

Visit store: [Adamantiquities1](#)

Ancient Luristan Near Eastern Iron Sword ,2nd millennium BC .  
 Provenance: Ex private England collector.  
 length: 52 cm.

**Visit our eBay store to see more great items from the Adam antiquities 1**

## Guaranteed Authenticity

We offer a diverse and changing range of high-quality Greek, Roman, Egyptian, Islamic and Near Eastern works of art. Our acquisition policy ad ethical, archaeological and aesthetic criteria. Our antiquities are of legal provenance: they belonged to established collections or have been purchased on the open market. All items have been fully researched and are sold with an unconditional Guarantee of Authenticity. We also guarantee absolute discretion and confidentiality.

Every item purchased comes with our lifetime unconditional guarantee of authenticity

**Provide collectors of antiquities with quality pieces at reasonable prices.**

Combined shipping accepted for multiple lots

**We Buy and sell Egyptian ,Greek, Roman, Islamic .....**

Cleaned thoroughly May 2020. Removed all rust and the epoxy used by earlier owner to cover up small pits etc. (rather well done)  
 Polished by hand the cross-section on the broken blade part. Did Nital etch. Definitely dirty old iron and possibly layered structure but not conclusive. Interesting enough for serious project





Bad picture but hints at “bad” iron inside and laminated construction.



Break with attempt to repair. Hand-polished left part

## Details IMAS 2

IMAS 2 was the second IMAS I acquired. It has rather perfect heads but rather corroded animals. The blade is actually broken but an attempt at repair was made. I hand-polished the cross-section of the lower part of the blade. What can be seen is compatible with a layered structure. No X-ray picture was taken. In what follows I keep the format of the IMAS 1 file. What one finds upon close inspection is:

### The Blade

The typical IMAS blade with a mid rip. Its length is identical to IMAS 1 but it is a tad wider at the lower half.

The blade may have been somewhat sharper than that of IMAS 1 but it is hard to tell due to corrosion.

There are no "wormholes".

### Corrosion Patterns

The blade and the animals are more corroded than IMAS 1 but there are no notable structures.

### Connection of Blade and Hilt

Similar to IMAS 1 but less elaborate. The mid rip width stays constant but the blade shows more taper. There is no "scalloped" band.



Where the blade tang enters the hilt (right under the "animals",) there is some re-enforcement with a circular shape, see the big picture below.







**Connection of blade to hilt**

### **The “Animals”**

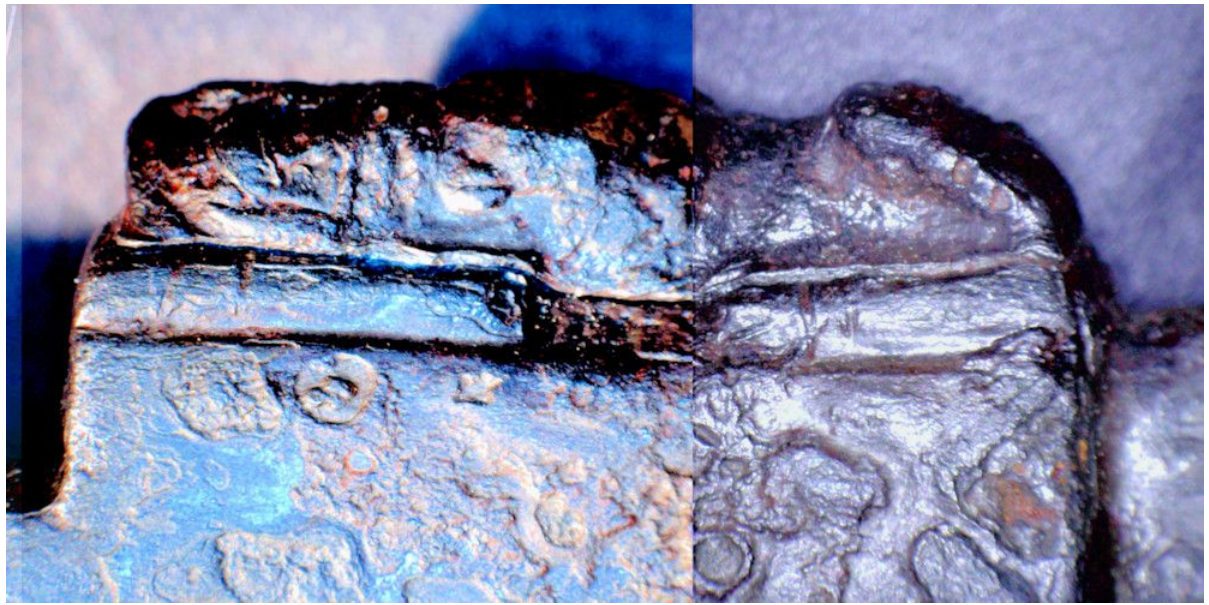
The major animals are heavily corroded and not much can be seen. It is clear, however, that they did not feature the protrusions or “horns” so prominent in the animals of IMAS 1. This will become definite when we look at the animals sprouting from the heads.

### **Fixing the Animals to the Hilt**

Presumably done by using a crimping plate but in a way much simpler than for IMAS 1







We see two crack lines where the animal starts to come off due to corrosion. The interpretation is as follows: The animal is not inserted into a fitting depression in the bulk of the hilt but into a “crimping plate” that was produced on its own and then welded to the bulk of the hilt. The animal is then put on that plate and crimped fixed, possibly followed by firing welding the rim.

**However. Upon close inspection, it appears that the un-corroded parts above are not just “crimps” but also the legs of the animal. This might indicate that the final carving was done after fixing the raw version of the animal to the hilt and then carving the details.**

**This makes some sense since fixing the whole contraption by fire welding including hammering, will damage the sculpture to some extent, especial at the legs on the far outside and right where the crimping takes place. It remains to be seen if this feature can also be found at other IMAS that started to come apart.**

Well, I had an epiphany about that. Use [this link](#) for details and go to the end of the module.

### The Bands around the grip



In contrast to IMAS 1 we find a single band not embedded in a crimped socket. That must be somewhat easier to make. The workmanship is perfect. There is no flaw in the fire welding of the band to the body of the grip nor can one see the junction of the band ends.

### Heads and the animals sprouting from the back of the heads





The heads plus animal front part are well preserved. The pictures can not do justice to what one sees in a stereo microscope. There is a somewhat less abstract face compared to IMAS 1. The circular structures are definitely the eyes. The protrusions are not pronounced; the rather look look like ears. That is, of course, easier to carve than heads with pronounced protuberances. The front legs ending in paws are prominently rendered.



### Structures below the top disc

There aren't any.

### The "Heads"

Well preserved and unique in its way. What on a first glance looks like a long beard is just a chin beard - the face is just very elongated. The mouth is small, just the width of the nose. The face is nevertheless quite possessive. It radiates power and superiority.



IMAS 2 appears to be a somewhat cheaper version of IMAS 1. Less decorations, less complex figures, simple bands, etc. There is no clear indication of a layered structure.