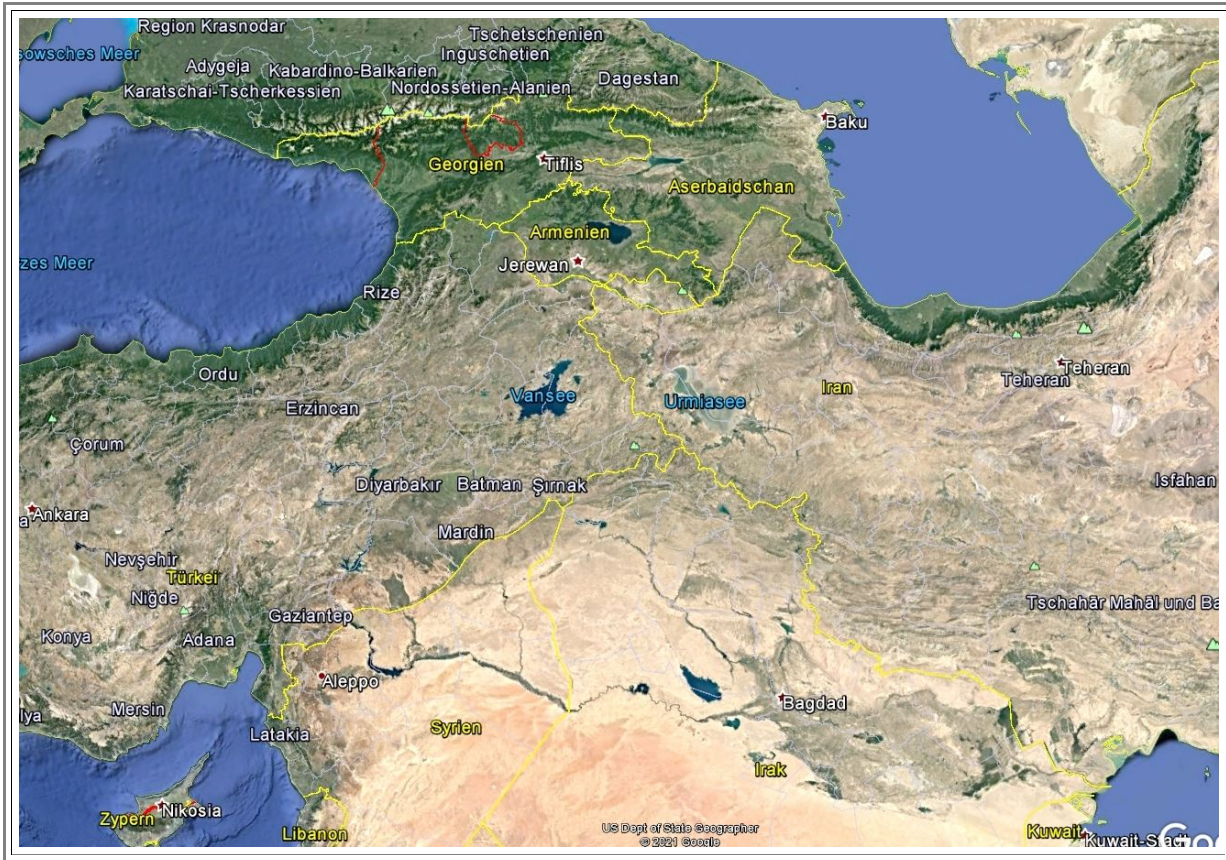


Large Pictures

[Home](#)

Science

First a large-scale map showing the modern borders of the countries in the general region.-
Wer essentially have (north) Iran, Aserbaidjan, Georgia, Armenia and Turkey.



Another map covering a lot of territory showing the important powers around 1300 BC



The region at large during - roughly - 1300 BC

Source: Wikipedia, from its article about the (unimportant) Amorite kingdom Amurru, established c. 2000 BC, in a region spanning present-day western and north-western Syria and northern Lebanon.

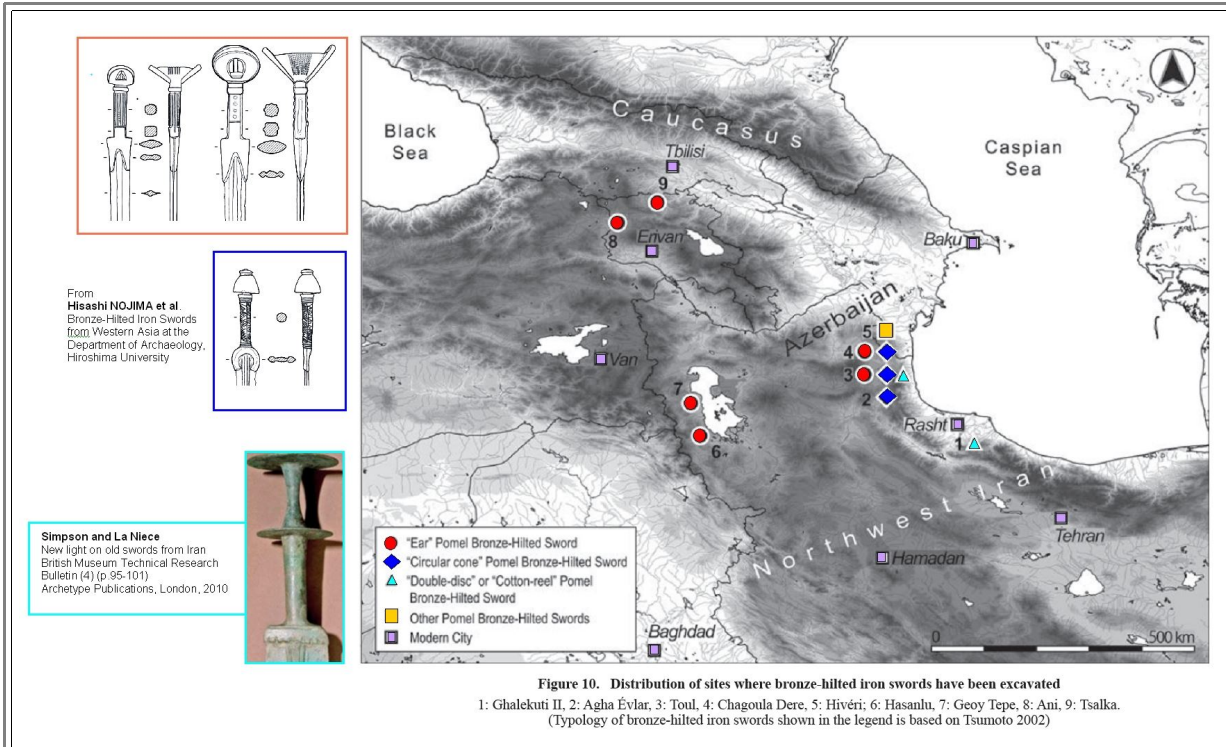
A picture of Hasanlu as seen today.



Hasanlu today

Source: Internet page: Visit Iran, Ministry of Cultural Heritage, Tourism and Handicrafts (MCHT)

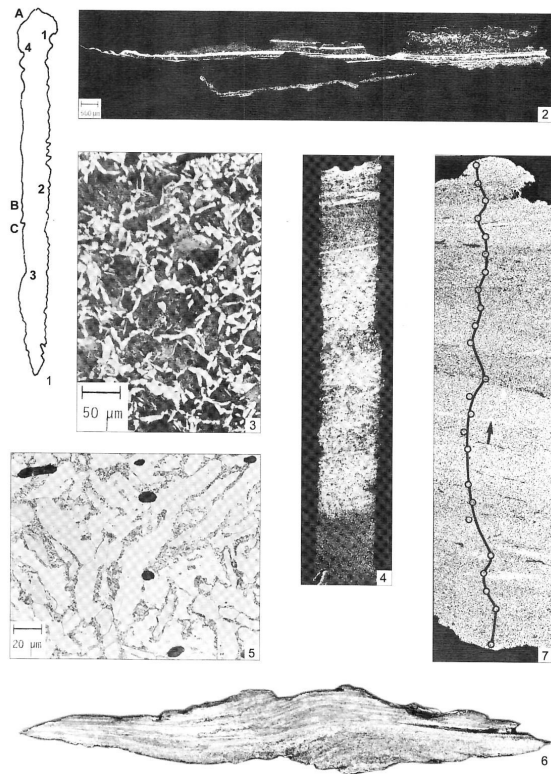
The following map shows where bi-metal swords have been found in scientific excavations. The map and the two pictures on top are from the papers cited. The added color and composition was my work. The authors actually did not use the term "circular cone bronze pommel" in their paper nor did they ever refer to "double disc" pommels in the text. That's why I included a picture from a different paper. The reference given in the picture captions would probably be of interest but is only available in Japanese, it seems.



Where hilts of bi-metal swords were found.

Source: [Hisashi NOJIMA et al.](#) Bronze-Hilted Iron Swords from Western Asia at the Department of Archaeology, Hiroshima University

The picture below shows the relevant page of [Pleiner's book](#) with details of the "[Singen](#)" sword

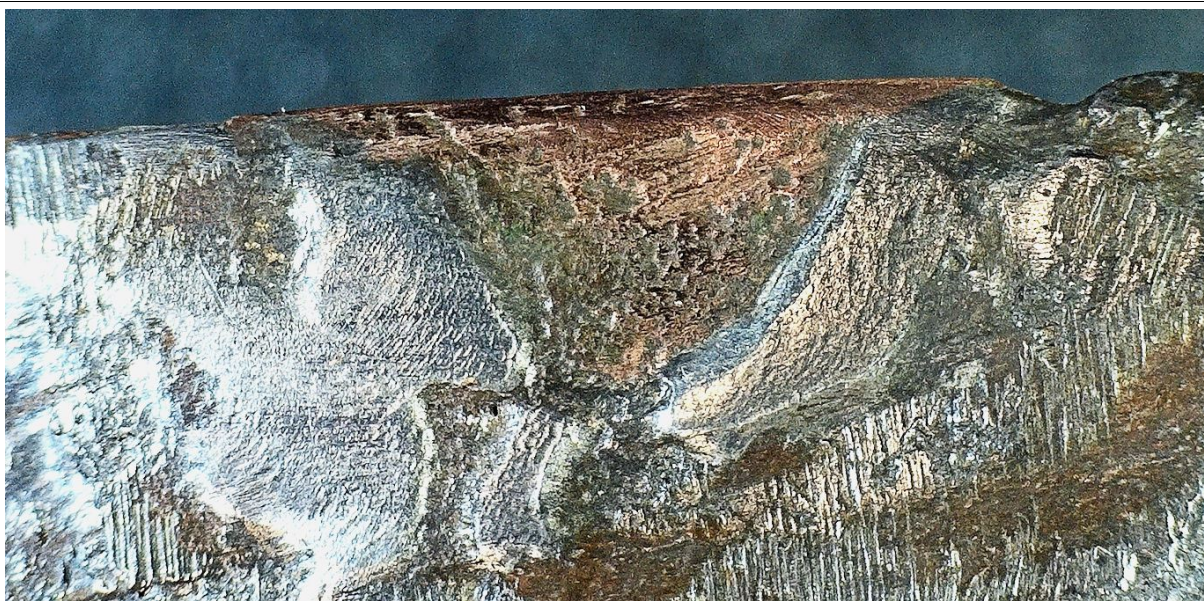


Pl. VIII: Piling of mild steel bands. Singen, SW Germany, sword blade of the 9th/8th century BC. 1 Sampling; 2 piled texture along the cutting-edge in specimen 4; 3 pearlite and ferrite network in a carbon-richer zone of specimen 2; 4 specimen 3 - bands of P-rich (dark) and P-poor (light) iron, etched after Oberhoffer; 5 Widmannstätten with globular pearlite; 6 blade cross-section B with the main split weld marked; 7 the same, ferrite and ferrite-and-pearlite structures. After Boll *et. al.*

[Link to text](#)

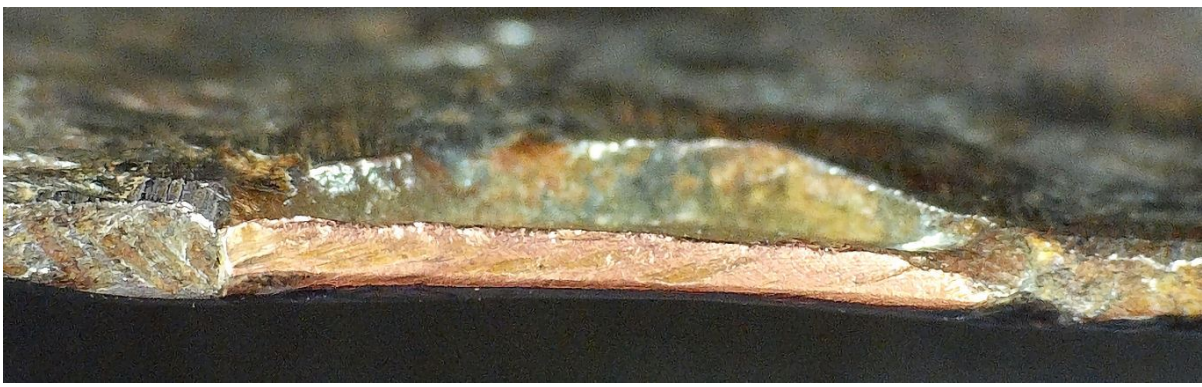
Source: [Pleiner's book](#)

Here are a few large size pictures showing the edge repair of the Luristan type I sword



The smaller bronze inset

[Link to text](#)



The smaller inset edge-on. The golden color makes clear that it is bronze

[Link to text](#)



The smaller inset seen from the other side

[Link to text](#)



The larger inset.

[Link to text](#)