

Development Luristan Finials
Tube Men





Met



Arch. Staatssammlung Munich

“Animals Only” Finials







Arch. Staatssammlung Munich



LACMA



The animals above are the “beasts”. The first few are modeled after some predatory cats with exaggerated teeth and a long tail. The last few look a bit more peaceful; partially because their mouth is closed.



The “ibex” group starts here. Pronounced are the horns, a beard, and often genitals.
Some have a long (and often twisted) tail. A real ibex has only a short little stub there.



Cleveland Museum
of Art



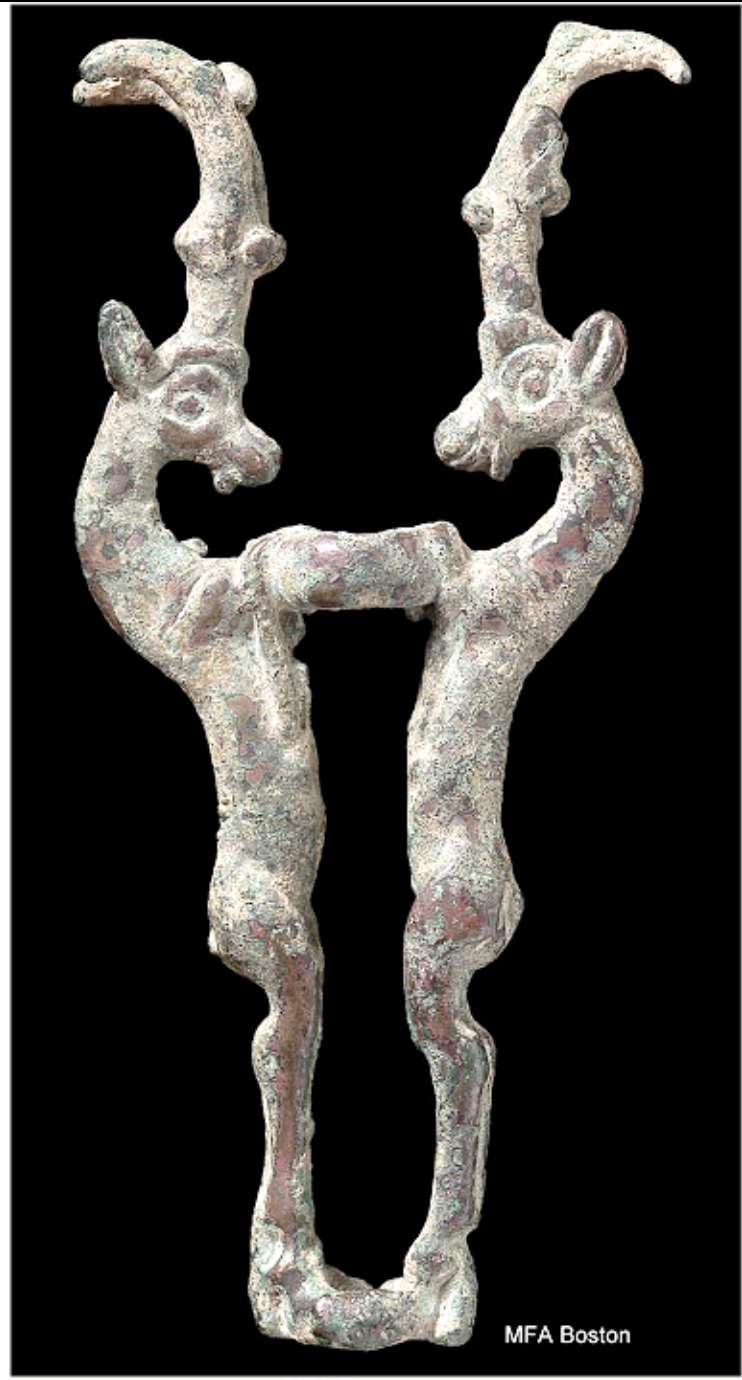
LACMA



MFA Boston



MFA Boston





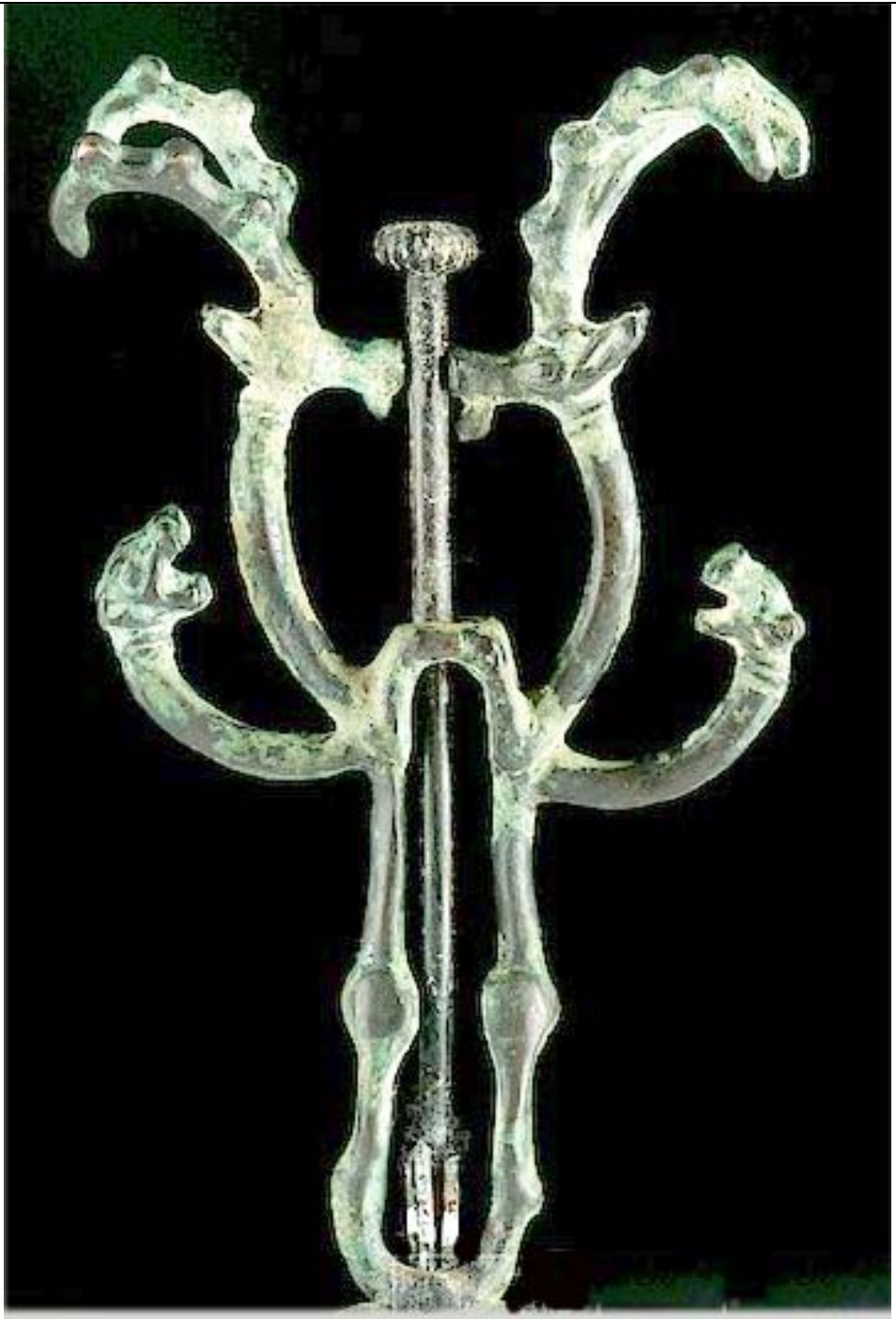
Christoph
Bacher



Royal
Athena

Galery







MFA Boston

Now for the weirder ones:

Here are two harness rings (there are many more in that style) and not finials that show an ibex plus the “beasts”. The beasts do not look all that menacing. In the second example they have “leopard” spots and the typical, if very abstract head. Their feet are far too large and with exaggerated claws or toes.

The second ring also sports two very typical heads. They are heart-shaped and have horns, something not often found on the finials



Met

Note the now fully stylized head of the beasts



Some of the old Luristani artists might have enjoyed a little joke now and then. Here we have two ibex with human heads and of opposite sex who are about to embark on some activity that is usually not all that violent. It might be a fake, but the Metropolitan Museum, we hope, does check its possessions.

Victim of Animals







Christies



Birmingham



ebay



Walters Art | Baltimore



Birmingham



Penn Museum



Birmingham



Birmingham



Arch. Staats-
sammlung Munich



Arch. Staats-
sammlung Munich



Arch. Staats-
sammlung Munich



LACMA



LACMA



British Museum



Penn museum



Met Museum



MFA Boston



Arch. Staats-
sammlung Munich





Above and in this needle we have ibexes instead of the beast doing – well, what are they doing? Biting his neck or ears?

Not that in the last two one the figure sports horns instead of the typical pot-like crown or hairdo.



LACMA

Some kind of transitory state. The figure now has a complete body with arms and legs. It is still held by the beast and they are nibbling at his ears, i.e. eating him. He does not look masterful but is in pain.

Soon he is going to use his arms to check the beasts.



Bacher

Front and back, Note the two sets of arms – form the beast and from the figure.