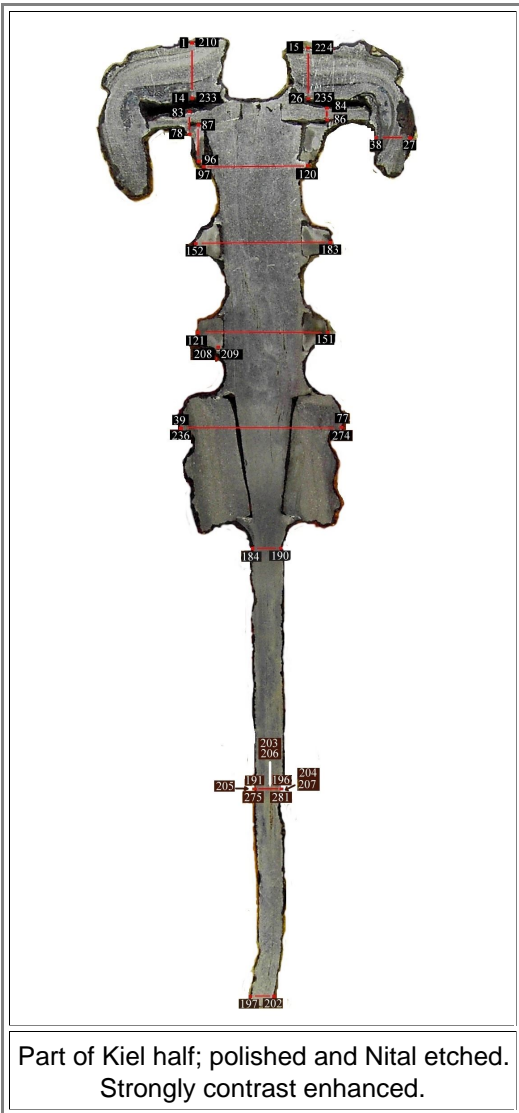


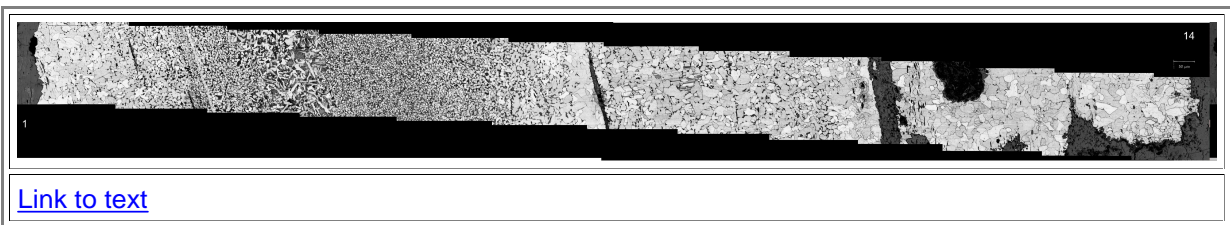
The Luristan Project - Large Pictures of Cut Sword

- These very large picture serve as permanent record of the project results. Some experts may recognize features not evident to us.
The first picture shows the positions of the scan once more for convenience

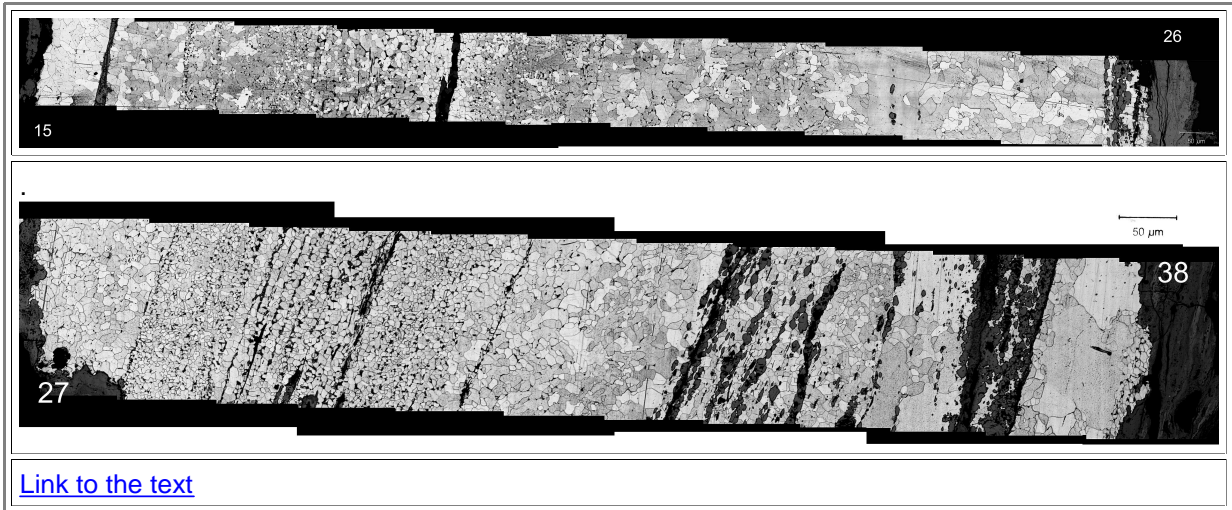
Illustration



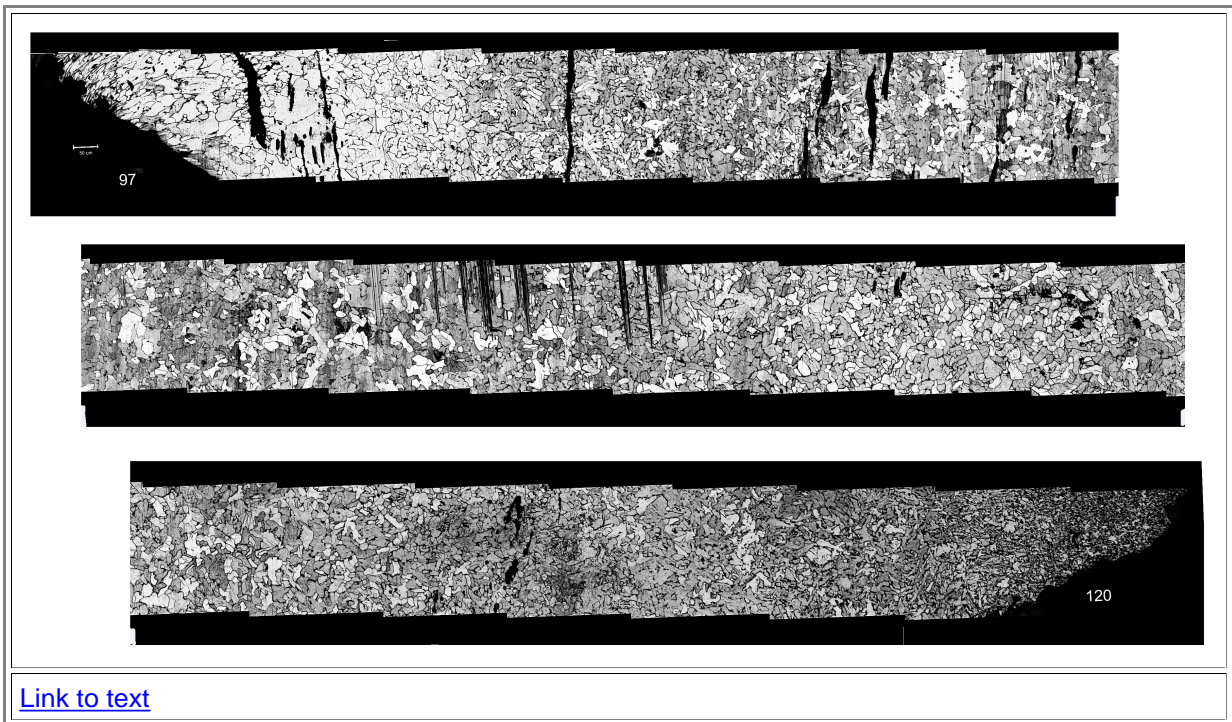
- Scan through the backside of the left head (animal part; 1 - 14). Turned 90° for convenience



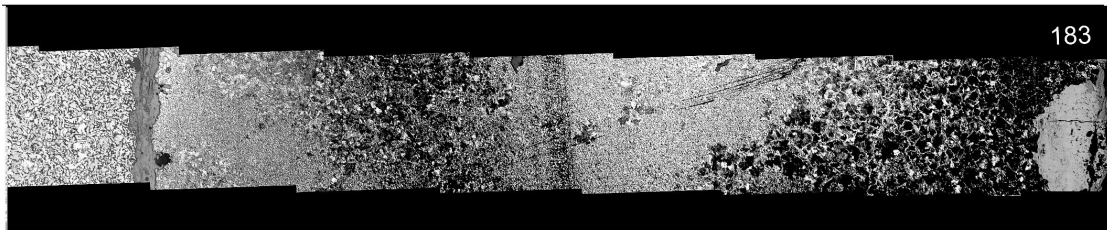
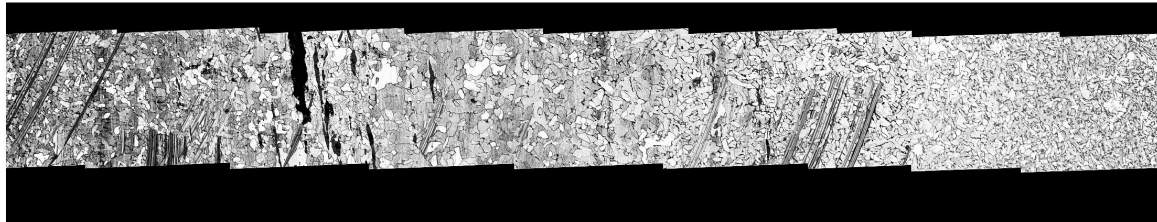
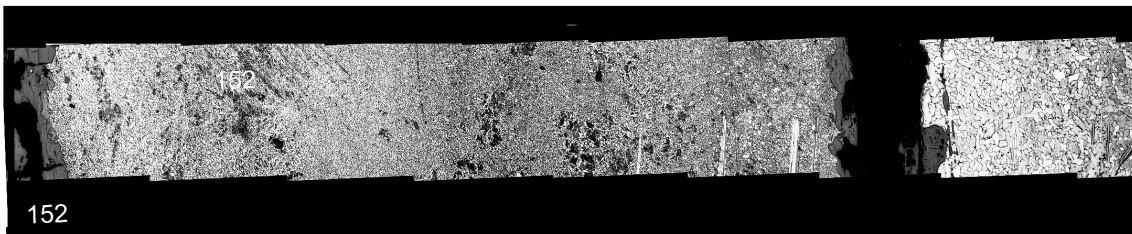
Scan through the backside of the right head (animal part; (15 - 26) and the "bead" region (38 - 27) Turned 90° for convenience



Scan through the hilt at the upper ring position (97 - 120)

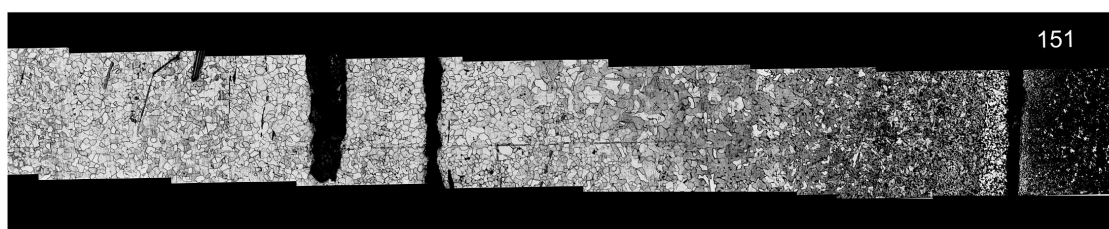
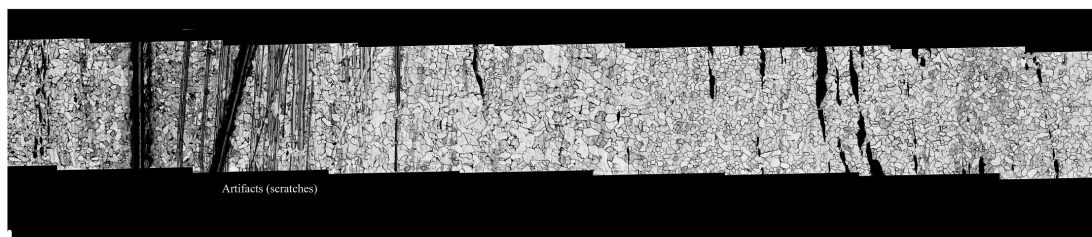
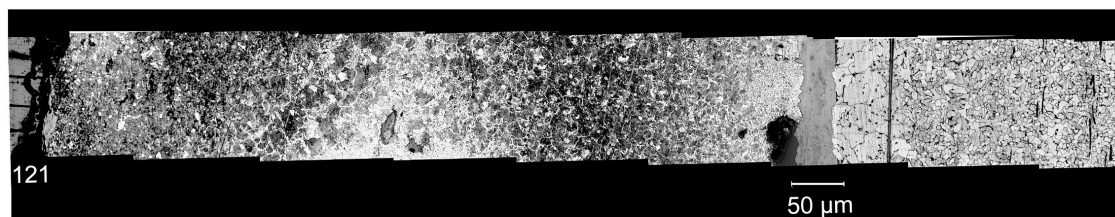


Scan through the hilt at the middle ring position (152 - 183)



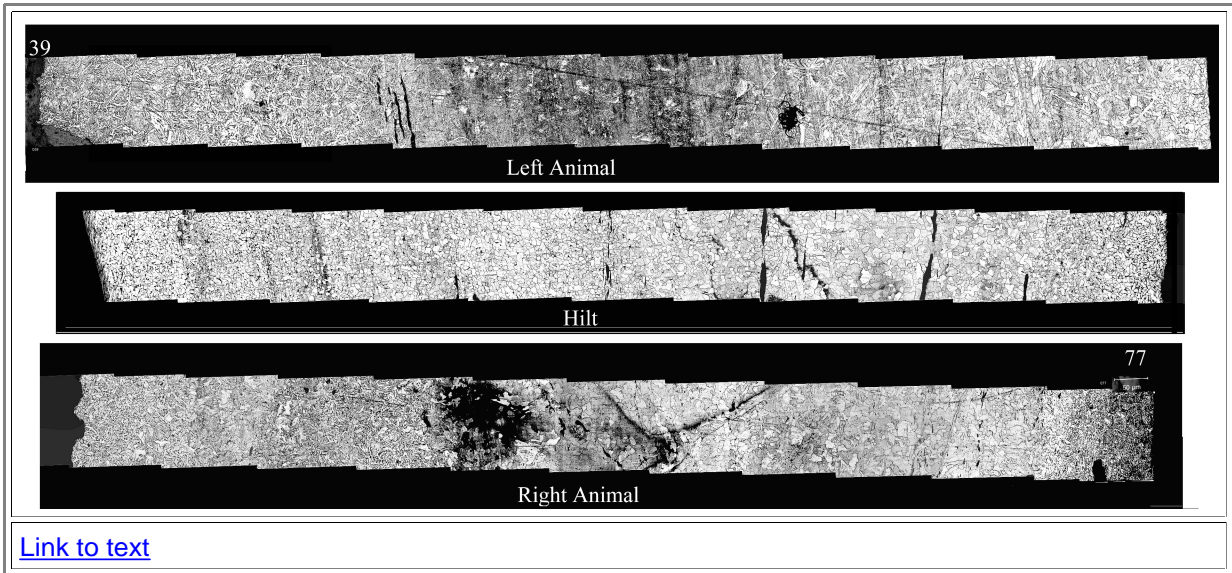
[Link to text](#)

Scan through the hilt at the bottom ring position (121 - 151)

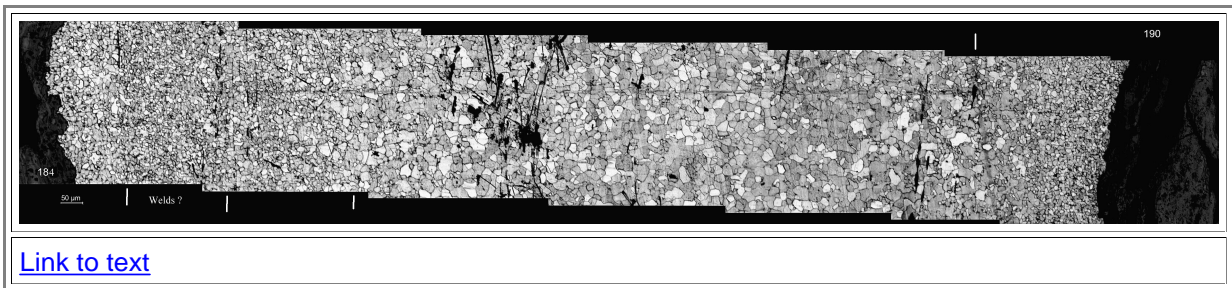


[Link to text](#)

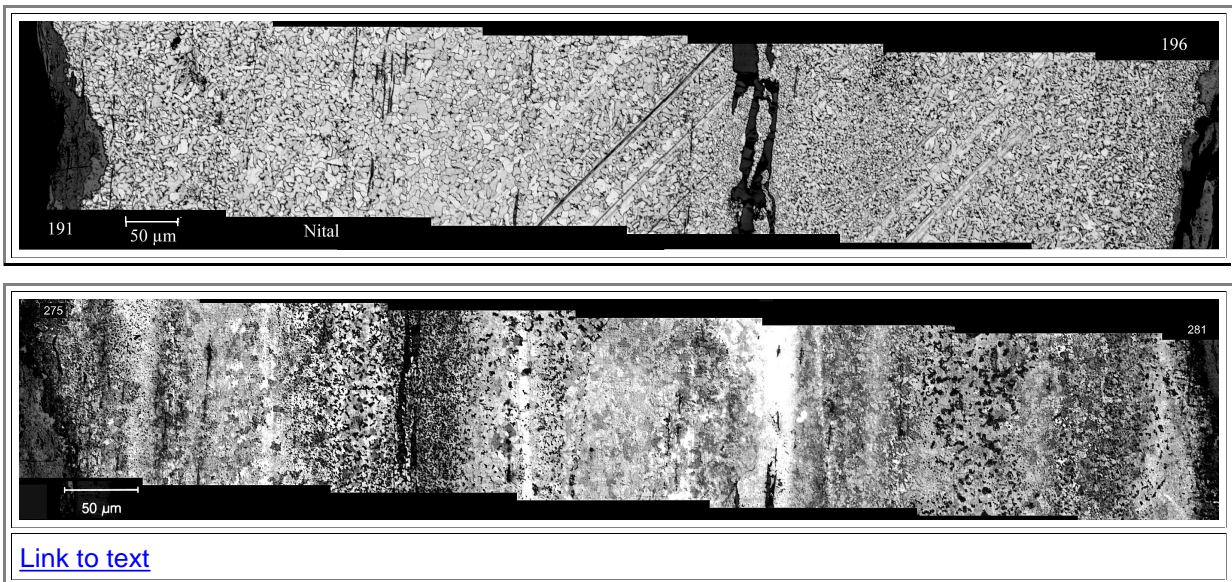
Scan through the animals and the hilt (39 - 77)



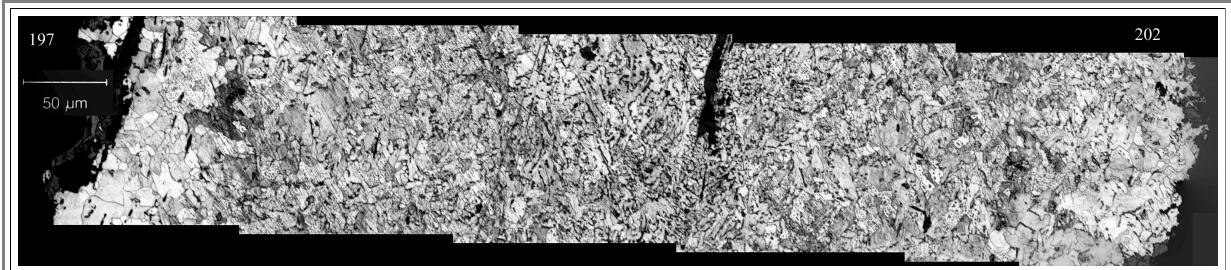
Scan through the blade close to the hilt (upper blade; 184 - 190)



Scan through the blade in the middle (middle blade; Nital 191 - 196; Oberhoffer 275 - 281):



Scan through the bottom end of the blade (197 - 202)



[Link to text](#)