

Large Pictures III

Danube Culture

Illustration

Here is a large version of the map showing the area of the Danube culture. The symbols denote places where something has been found; numbers refer to the exact locations. Only some of the specific cultures going with the symbols have been indicated. For all the details see the book of [Harald Haarmann](#)



[Link to text](#) Source: A somewhat modified version of the map given in the frontispiece of [Harald Haarmann's book](#)

This is a large-scale picture of the famous Cernavodă "thinker" with his wife or admirer (?)



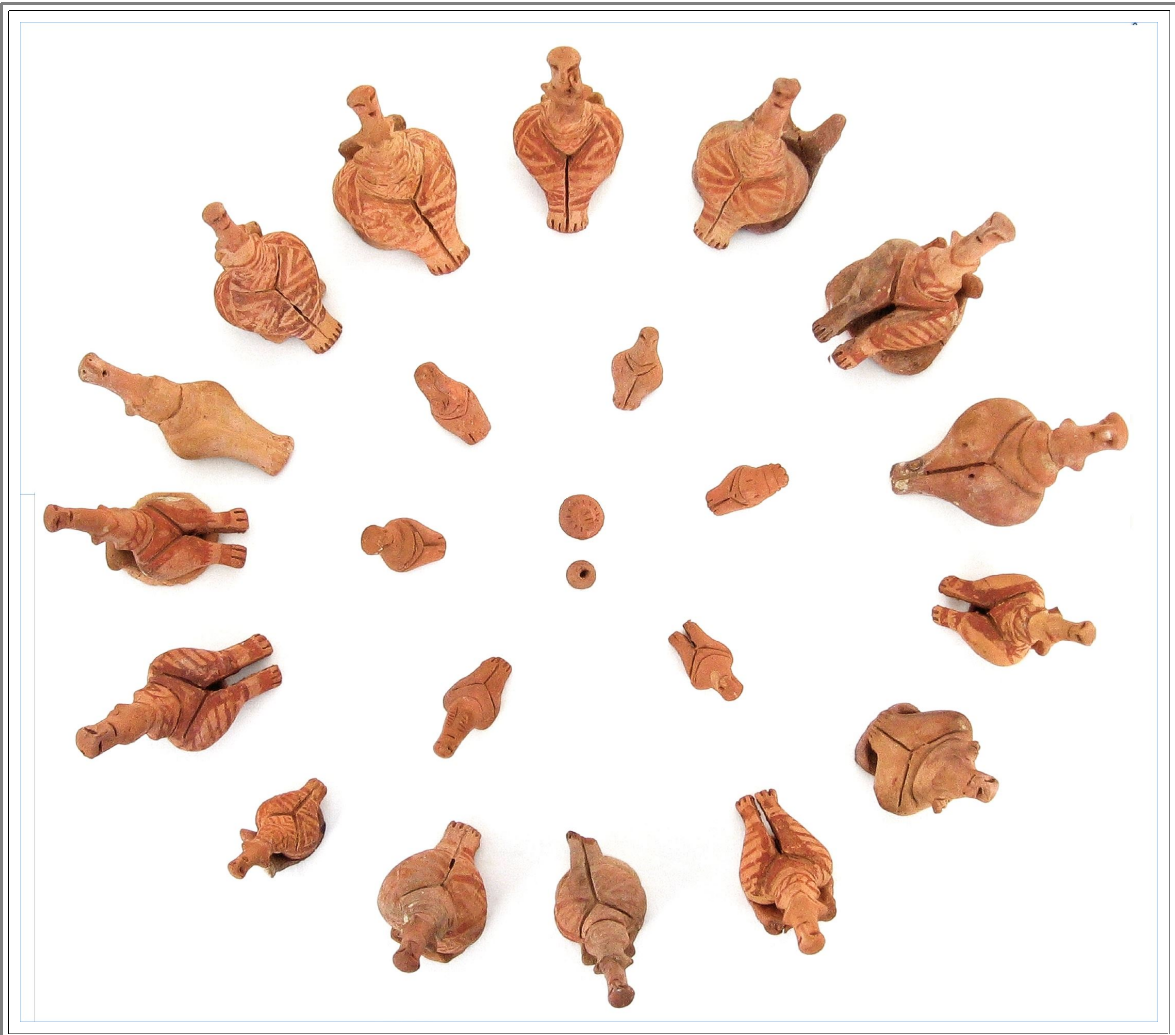
[Link to text](#) Source: [This article](#)

▶ This picture shows a set of twelve "red clay" figurines of the Cucuteni culture from around 4200–4050 BC



[Link to text](#) Source: [This article](#)

This set of twenty-one figurines and thirteen chairs is als from the Cucuteni Culture, about 4900–4750 BC ("Pre-Cucuteni II"). The figurines were found inside a pottery vessel.



[Link to text](#) Source: [This article](#)

Below is a picture of the "temple" unearthed in 2014 at a Trypillian site. I'm not exactly sure what one sees but it is definitely big.



[Link to text](#) Source: Sci-News.com, Oct 22, 2014

Here is a geomagnetic survey of Maidanetske, showing what one can do with modern methods.



[Link to text](#) Source: K.NuT RAssMANN, .ALEKSEY KoRVIN- PIOTROVSKTY, MYKHAILO V IDEIKO AND JoHANNES MuLLER: "The New Challenge for Site Plans and Geophysics: Revealing the Settlement Structure of Giant Settlements by Means of Geomagnetic Survey"; in: Müller, J., Rassmann, K., Videiko, M. (Eds.), Trypillia Mega-sites and European Prehistory: 4100-3400 BCE, Routledge, London, pp.29 -54

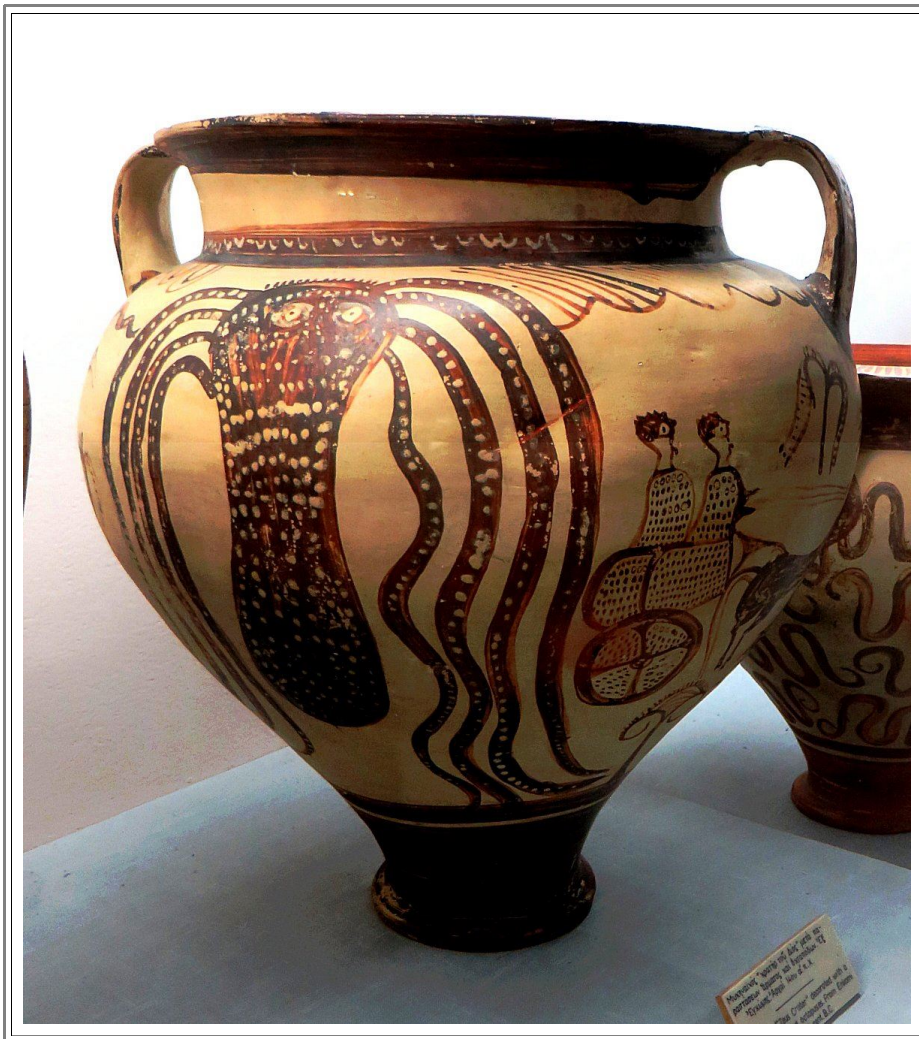
Cyprus Museum

Ain't those things below rather amusing?



[Link to text](#) Source: Photographed in the Cyprus Museum in Oct. 2016

The "Kopffüßer" (cephalopod) below got my attention because I'm going to be turned into one soon. A few days after we are back from Cyprus, a world-renowned surgeon will take out a part of my fibula (that smaller bone in your lower leg) and stuff it into my mouth. Does not sound like a lot of fun (and isn't; trust me, I went through the experience by now) but goes a long way in reconstructing an upper jaw bone that was lost to benign but recurring tumors. Soon I might have teeth again!



[Link to text](#) Source: Photographed in the Cyprus Museum in Oct. 2016

Uluburun Shipwreck

Here is a picture of what the divers saw. I suspect though that the cargo wasn't that "clean" but covered with sand and debris.



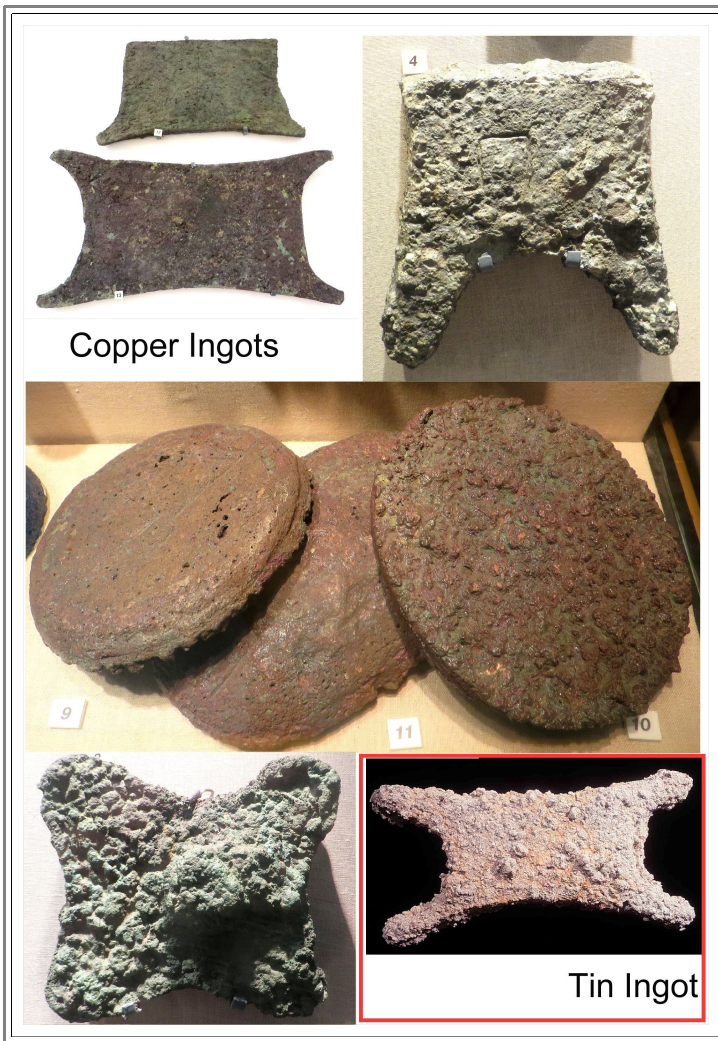
[Link to text](#) Source: Photographed in the Bodrum Museum in May 2017

A longitudinal section through the ship, showing how the cargo was stored. This is an artists conception but based on the way the stuff was found on the sea floor.



[Link to text](#) Source: Photographed in the Bodrum Museum in May 2017

Here are some ingots:



[Link to text](#) Source: Photographed in the Bodrum Museum in May 2017

One of the show cases. The weapons and the pottery are obvious but what is No. 9?
Turns out it is a ceremonial scepter-mace of volcanic stone.



[Link to text](#) Source: Photographed in the Bodrum Museum in May 2017

▀ A show case with some of the precious stuff:



[Link to text](#) Source: Photographed in the Bodrum Museum in May 2017

▀ A close-up fo the hilt construction of two bronze daggers.
Several pieces of wood (?), ivory (?) metal etc, have been fitted to the bronze-enclosed "hollow";
possibly glued in by the ["turpentine" resin](#) mentioned in the main text.



[Link to text](#) Source: Photographed in the Bodrum Museum in May 2017