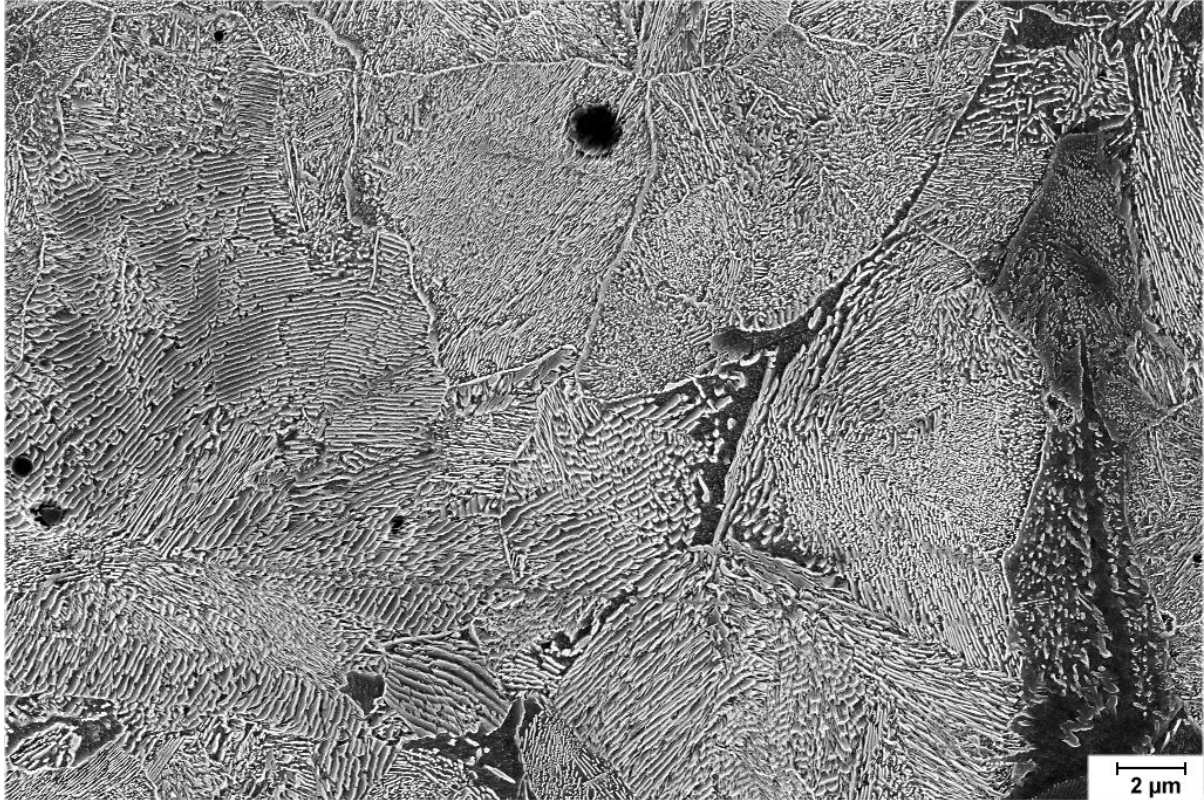


Additional Pictures - Chapter 7.1

Illustration

Here is fully developed pearlite for a steel that must be close to the eutectoid composition. The specimen is from a nondescript sword fragment from the [Nydam "treasure"](#). The "zebra structure" is well-developed, The spacing between the cementite lamellae is around $0.15\ \mu\text{m}$ or smaller and thus completely invisible in an [optical microscope](#) with a resolution limit around $1\ \mu\text{m}$



[Link to text](#)

Source: The picture was taken by one of the indispensable [grad students](#) (Jan-Hendrik Morjan in this case) while doing a Master thesis under my supervision.