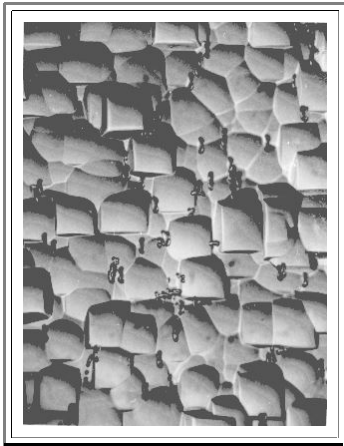


Process Induced Defects: Large View of Haze and Stacking Faults

Illustration

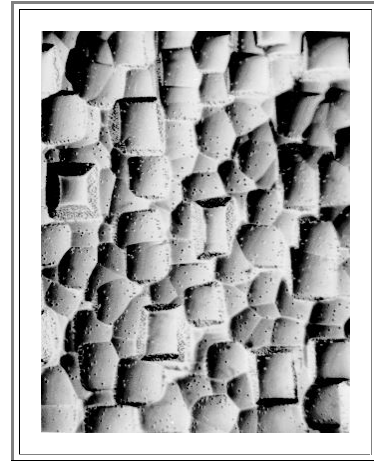
Stacking faults



The stacking faults are shown by a groove along their intersection with the surface, always bound by two deep etch pits denoting the Frank partials bounding the stacking fault.

[Back to overview](#)

Haze



Classical "Haze". Small etch pits in rather large density denote metal precipitates. The "Tweezer marks" in the [other set of pictures](#) are haze, too, but at the edge of the detection limit.