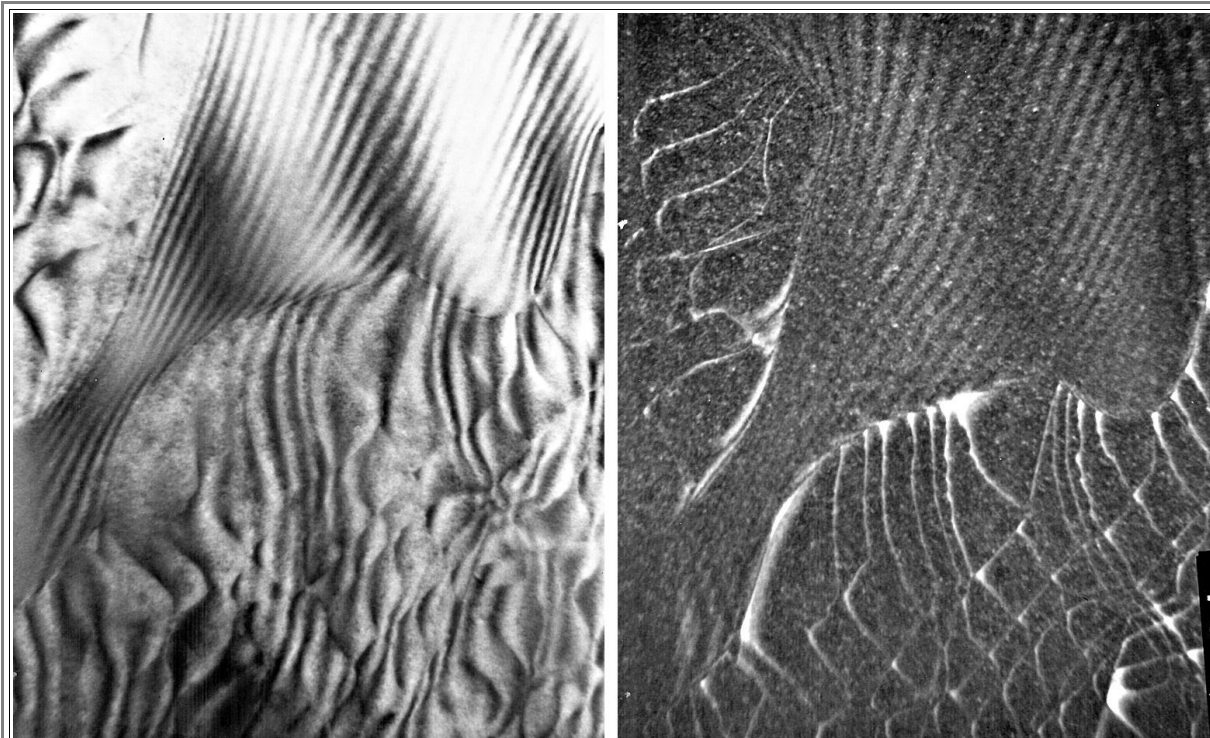


Pictures to: 3.1 TEM Work at Cornell University

3.1.1. TEM Investigations of Grain Boundaries in Silicon

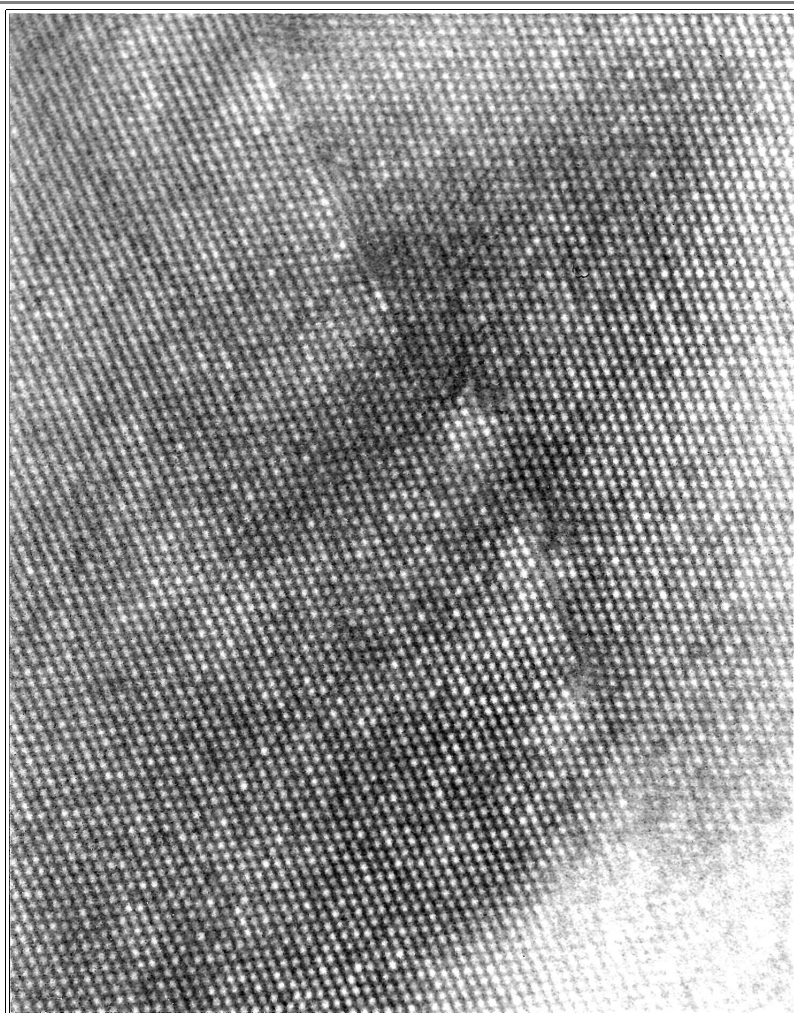
Part 3: Auxiliary Pictures

Picture will follow that were not included in the paper.



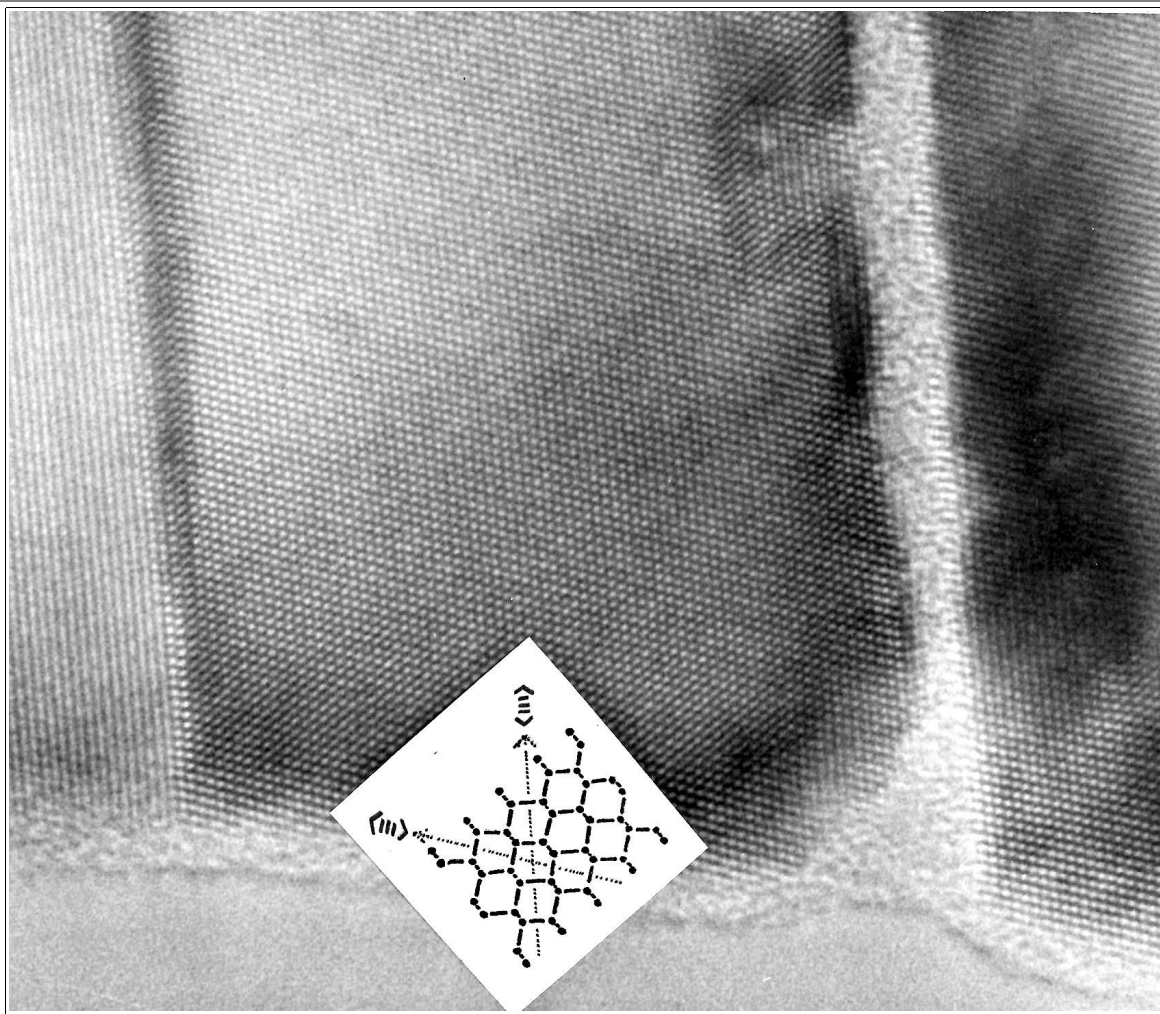
Comparison Bright Field - Weak Beam

Just shows that it was not so easy to see the structures clearly.



HRTEM image of small-angle tilt boundary in Si.

Similar to Fig. 15 in publication. This may not have been the very first HRTEM of a small angle boundary but it was definitely among the first ones.



Grain boundary decoupled from amorphous regions?

The GB is on the left and a parallel-running amorphous region (SiO₂?) nearby.

[Link to Part 1](#)

[Link to Part 2](#)